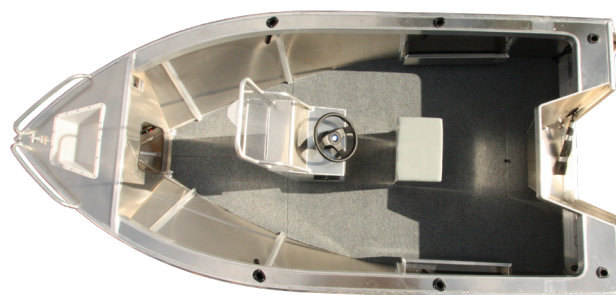


SPECIFICATIONS	4.48	4.68
bottoms (mm)	3.0	3.0
plate sides (mm)	3.0	3.0
beam (m)	2.12	2.24
depth (m)	1.08	1.14
depth inc console (m)	1.91	1.96
floor ribs	9	11
no. of persons	4	5
weight approx (kg)	TBA	352
rec hp	40	50
max hp	60	75
max motor weight (kg)	120	165
FEATURES		
anchorwell	.	.
bollard front	.	.
bulkhead storage front	.	.
bungs -38mm x 2	.	.
console centre with screen	.	.
console has drink holders fitted	.	.
floor - carpeted/plywood	.	.
gunwhale rubber inserts	.	.
handles rear	.	.
rear step and rail	.	.
reverse chine - adrenalin hull	.	.
rod holders plastic x 6	.	.
side pockets x 2	.	.
spray chines	.	.
keel - external	.	.
steering - push pull	.	.
towing eye (double)	.	.
transducer bracket	.	.
under floor floatation	.	.
wide side decks to bow	.	.
rear step & rail	.	.
TRANSOM		
motor well	.	.
transom tie down lugs	.	.
RAILS		
short front rails	.	.
SEATS		
upholstered storage box	.	.
OPTIONS		
painting	opt	opt
acc pre rig	opt	opt
fuel tank	opt	opt



NAVIGATOR - CONSOLE



The Navigator features our new Adrenalin hull and designed for the fisherman, this model is standard unpainted, however paint is always an option, and fitted with just the necessary features to keep the cockpit open for ease of movement around the boat. An ideal model for fishing, crabbing or prawning, your opinions are endless. A seat / storage box is located behind the console for seating needs; this model also has a motorwell and wide side decks. An anchorwell & front bollard is positioned in the foredeck, plus side pockets for storage, and a rear step and rail for easy access, with more listed in our features section of this model.



For the latest & additional information on this model please visit www.seajay.com.au/navigator/ or scan the QR Code with your Smart Phone